

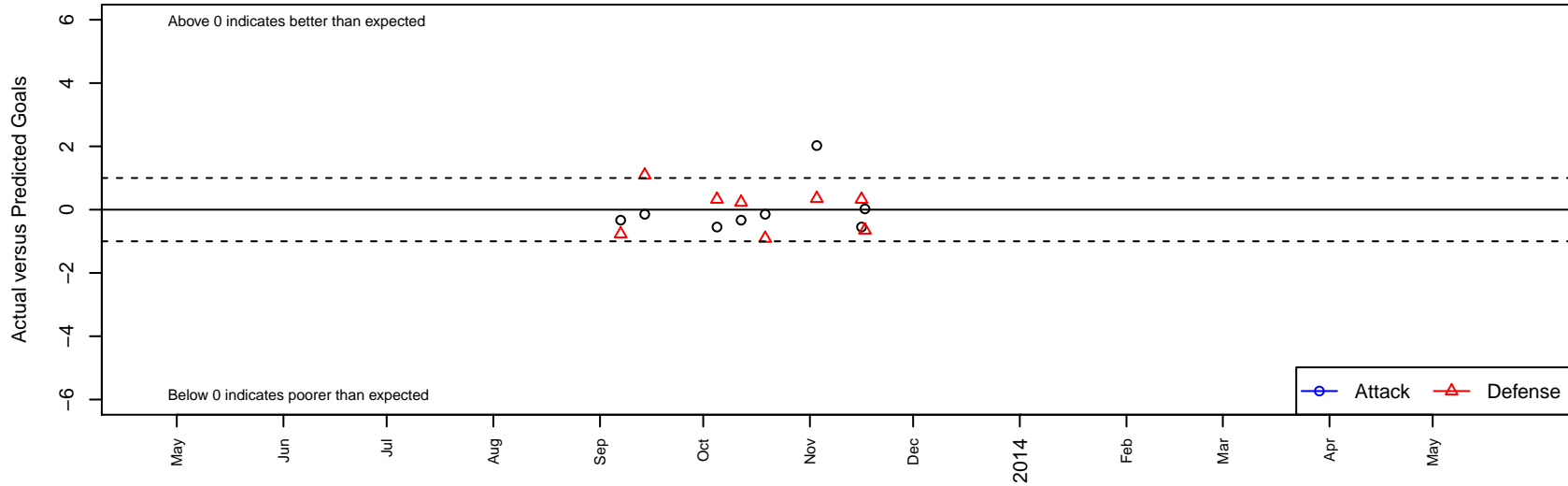
# Alpine Strikers FC Red G00

, CAN  
 G00 total strength=1232  
 attack=3.42 defense=5.86  
 alt names used:  
 Alpine Strikers FC 00G Red

Venues played:  
 NorCal Premier F11 – Region 2 U13



**Alpine Strikers FC Red G00**  
 Dots are actual minus expected GF (blue circles) and GA (red triangles).  
 Blue line is smoothed change in attack strength. Red is smoothed change in defense strength.



	<b>date</b>	<b>home</b>		<b>away</b>		<b>venue</b>	<b>pred.home</b>	<b>pred.away</b>
10838	2013-11-17	Alpine Strikers FC Red G00	1	De Anza Force Blue G00	2	NorCal Premier FI1 – Region 2 U13	0.98	1.35
10770	2013-11-16	Palo Alto 01 Blue G00	1	Alpine Strikers FC Red G00	0	NorCal Premier FI1 – Region 2 U13	1.33	0.55
10608	2013-11-03	Alpine Strikers FC Red G00	3	De Anza Force Blue G00	1	NorCal Premier FI1 – Region 2 U13	0.98	1.35
10206	2013-10-19	Alpine Strikers FC Red G00	0	San Bruno Lowen 83 Aftershocks G00	3	NorCal Premier FI1 – Region 2 U13	0.14	2.09
10016	2013-10-12	Burlingame SC Rays G00	2	Alpine Strikers FC Red G00	0	NorCal Premier FI1 – Region 2 U13	2.23	0.33
9830	2013-10-05	Alpine Strikers FC Red G00	0	Palo Alto 01 Blue G00	1	NorCal Premier FI1 – Region 2 U13	0.55	1.33
9344	2013-09-14	San Bruno Lowen 83 Aftershocks G00	1	Alpine Strikers FC Red G00	0	NorCal Premier FI1 – Region 2 U13	2.09	0.14
9186	2013-09-07	Alpine Strikers FC Red G00	0	Burlingame SC Rays G00	3	NorCal Premier FI1 – Region 2 U13	0.33	2.23